

The background of the entire page is a photograph of several large industrial pumps and electric motors. These machines are light grey or off-white with prominent cooling fins. They are arranged in rows, with some having green straps wrapped around them. The scene is set in an industrial environment, possibly a factory or a large storage yard. A semi-transparent teal and green geometric overlay is present in the top-left and bottom-right corners, framing the text.

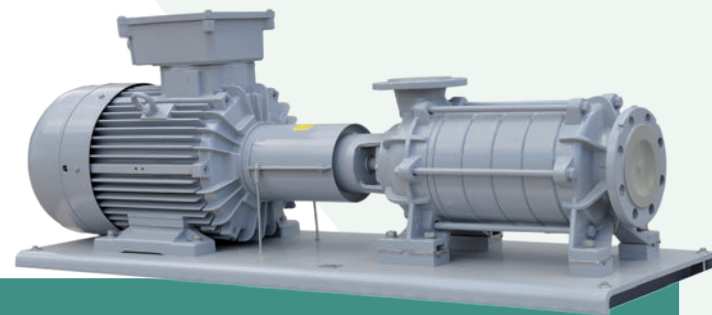
MAKEEN
ENERGY

FAS LPG NZ Pump Technology

Efficiency - Experience - Reliability

The FAS NZ series centrifugal pumps are designed to optimise performance while significantly reducing energy consumption. The compact construction, the optimisation of the hydraulic components, and the reduction of noise level and vibrations are further advantages.

These pumps are specifically suitable for the use in innovative and highly complex large-scale projects such as LPG terminals, tank farms, district heating power stations, refineries etc. The pumps may also be supplied with adapters for exchange of other pump models.



Overview FAS NZ Pump Models

Model	Capacity m³/hr	Differential pressure bar	Motor capacity kW	Flange connection Inlet/Outlet, DN
NZ 18-8-10	18	8	10.0	65/40
NZ 25-13-15	25	13	15.0	80/65
NZ 30-9-15	30	9		
NZ 30-14-24	30	14	24.0	
NZ 40-6-12,5	40	6	12.5	125/100
NZ 40-8-15		8	15.0	
NZ 40-10-20		10	20.0	
NZ 60-5-15	60	5	15.0	
NZ 60-7-20		7	20.0	
NZ 60-10-28		10	28.0	
NZ 80-6-24	80	6	24.0	
NZ 80-7-28		7	47.0	
NZ 80-11-47		11		
NZ 100-5-24	100	5	24.0	
NZ 100-7-28		7	28.0	
NZ 100-10-47		10	47.0	
NZ 150-5-36	150	5	36.0	
NZ 150-7-47		7	47.0	
NZ 150-10-58		10	58.0	
NZ 170-5-47	170	5	47	
NZ 170-8-75		9	75	

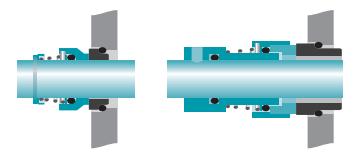
Other pump models and executions available on request.

Technical features:

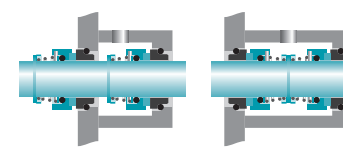
- Capacities up to 170 m³/h
- Max. differential pressure 14 bar

Options:

- Single-acting mechanical seal (standard)



- Double-acting mechanical seal



- Magnetic coupling



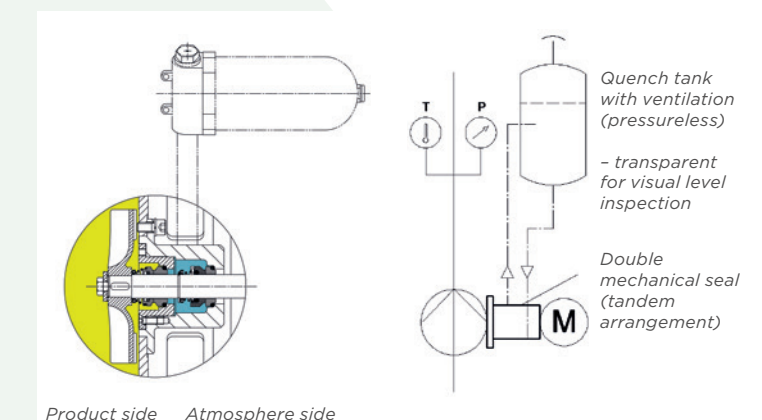
Key benefits:

- Prevention of leakages
- Monitoring of leakage rate
- Cooling and lubrication
- Dry-running protection
- Stabilisation of lubrication film e.g. in vacuum operation
- Hermetic sealing for media reacting in an undesired way or crystallising when in contact with oxygen
- Prevention of icing
- Reduction of operating costs

Use of double mechanical seals in Tandem Arrangement

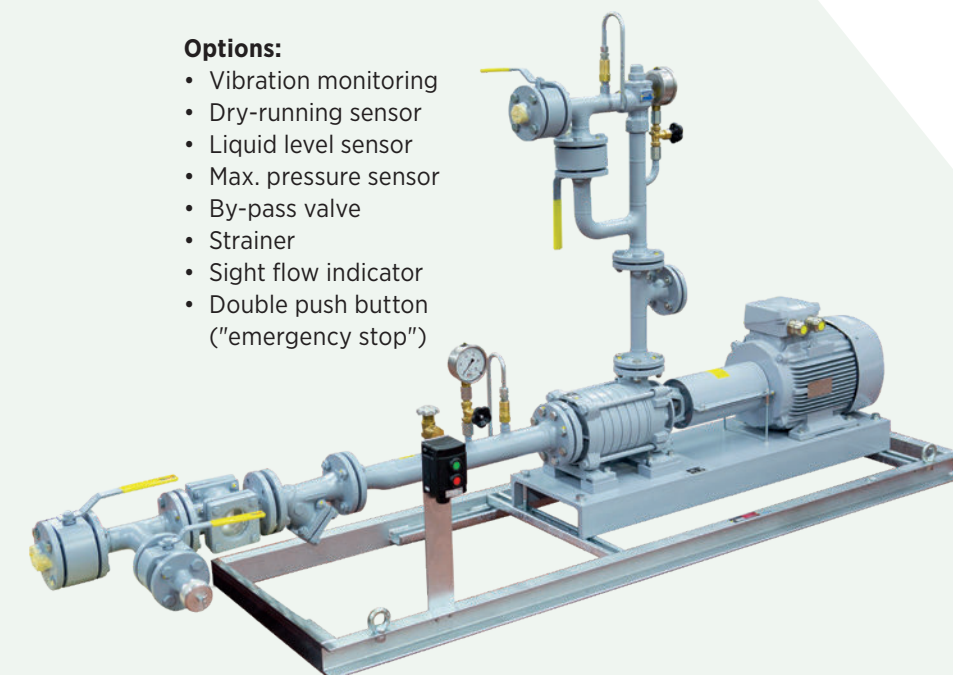
Unlike single mechanical seals, the double mechanical seals prevent the medium from escaping into the atmosphere, even if the first seal fails, for a limited period of time. The tandem arrangement is a combination of two single mechanical seals arranged in a series. For double mechanical seals in tandem arrangement, a supply system is needed for the flushing liquid or quench medium.

The option with a magnetic coupling is the safest solution for a highly reliable and leak-free operation. The magnetic couplings are long lasting as per design with the lowest maintenance costs.



Options:

- Vibration monitoring
- Dry-running sensor
- Liquid level sensor
- Max. pressure sensor
- By-pass valve
- Strainer
- Sight flow indicator
- Double push button ("emergency stop")



MAKEEN ENERGY

Find more information about your local
MAKEEN Gas Equipment contact on
makeengasequipment.com/get-in-touch
Or scan the QR-code.



Flüssiggas-Anlagen GmbH

Peiner Straße 217
38229 Salzgitter
Germany
Tel +49 5341 8697-0
Fax +49 5341 8697-11
info@fas.de
www.fas.de

MAKEEN Gas Equipment Headquarters

Alsvej 21
8940 Randers SV
Denmark
Tel +45 8644 8734
mge@makeenenergy.com
www.makeengasequipment.com
www.makeenenergy.com

Follow us on:



MAKEEN Gas Equipment offers a wide range of high-quality gas equipment and components along with expert guidance from the beginning to the end of your project. In that way, our one-stop shop philosophy – and many warehouses around the world – provide you with much more than just a product. MAKEEN Gas Equipment is a company under MAKEEN Energy.

MAKEEN Energy is a global, market-leading corporation that delivers technological solutions, equipment, and customer support to the energy industry. We employ approx. 4,000 people across 6 continents and operate in over 140 countries. With our global reach, local presence, and decades of experience, we can deliver responsible solutions that make a difference to people and planet.